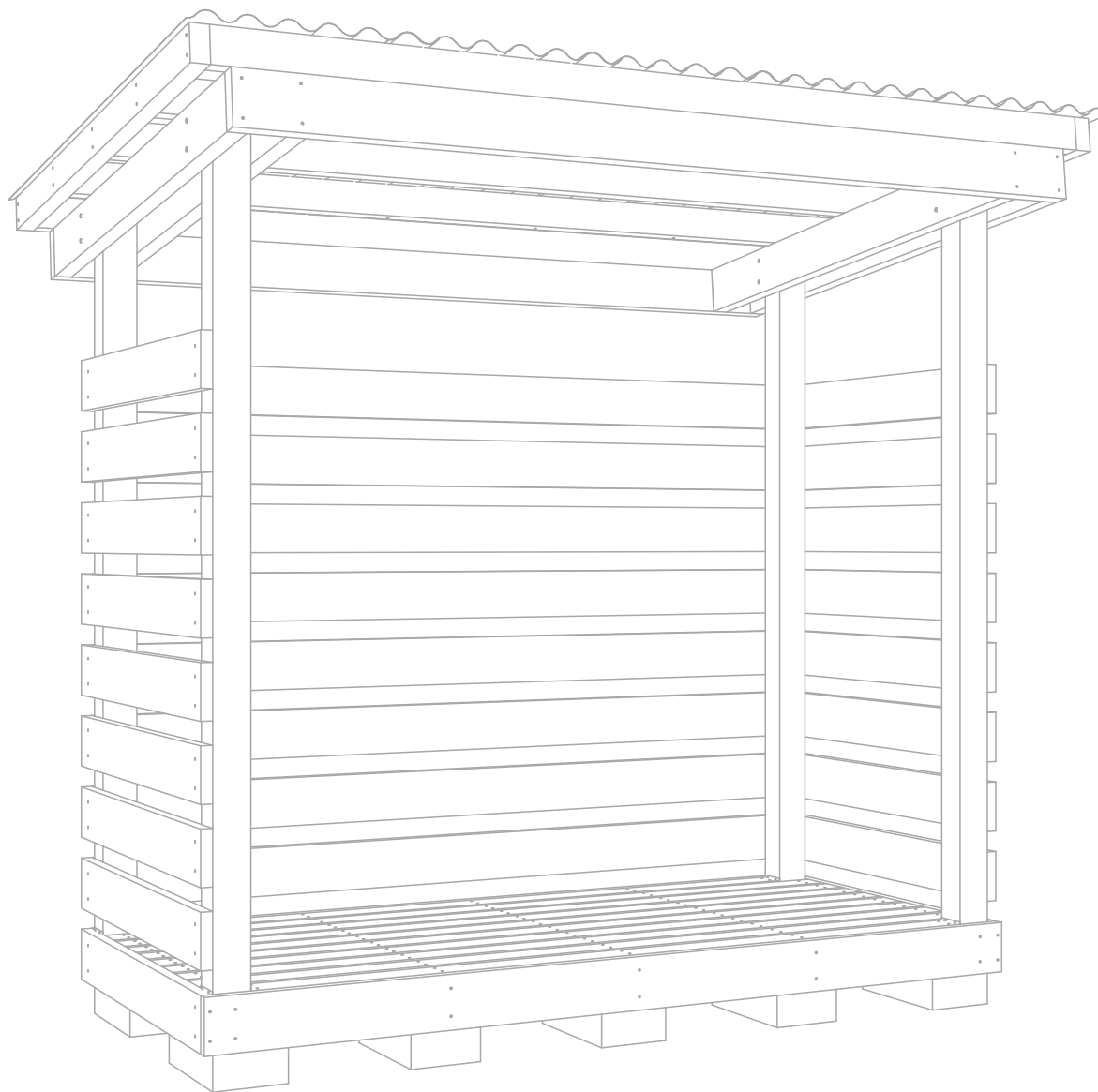




FIREWOOD SHED

PLANS 4'x8'



Product information

FIREWOOD SHED PLANS 4'x8'

These are complete plans and instructions for building a firewood shed that is a perfect solution to store firewood. In this file you can follow technical plans and easy step by step pictures. The components of the woodshed structure are designed to be made of pressure treated wood and good connectors.

The design of this woodshed is easy to scale up or down thanks to the modular method that is used. You can make additional bents that is simplified by the assembly-style approach.

What is included

- Material and Cut List
- Full Plan Drawings
- Plan Detail Drawings
- Step by Step Instructions
- Helpful Tips

Building Size & Shape

Building Size: 4x8 ft / 48x96 in
Overall Height: 106 5/8" (8.88 ft)
Roof Pitch: 6° / 3,43 % / 0.72:12
Roof Rise: 7.9 in
Floor Shape: Rectangle
Capacity: 1.5 Cord

Building Features

Foundation: Concrete Blocks
Floor Framing: 2x4 in
Walls/Sidings: 1,25x6 in
Design: Modular (Scale Option)

SHEET LIST

N.	Sheet Name
1.01	3D Perspective View
2.01	Materials Schedule
2.02	Framing
2.03	Fasteners
3.01	Foundation Plan
3.02	Floor Plan - Floor Beams
3.03	Floor Plan
3.04	Floor Plan - Roof Framing
3.05	Floor Plan - Roof
3.06	Views 1 and 3
3.07	View 2
3.08	View 4
3.09	Section 1
3.10	Section 2
4.01	Step 1
4.02	Step 2
4.03	Step 3
4.04	Step 4
4.05	Step 5
4.06	Step 6
4.07	Step 7
4.08	Step 8
4.09	Step 9
5.01	Notes

FIREWOOD SHED

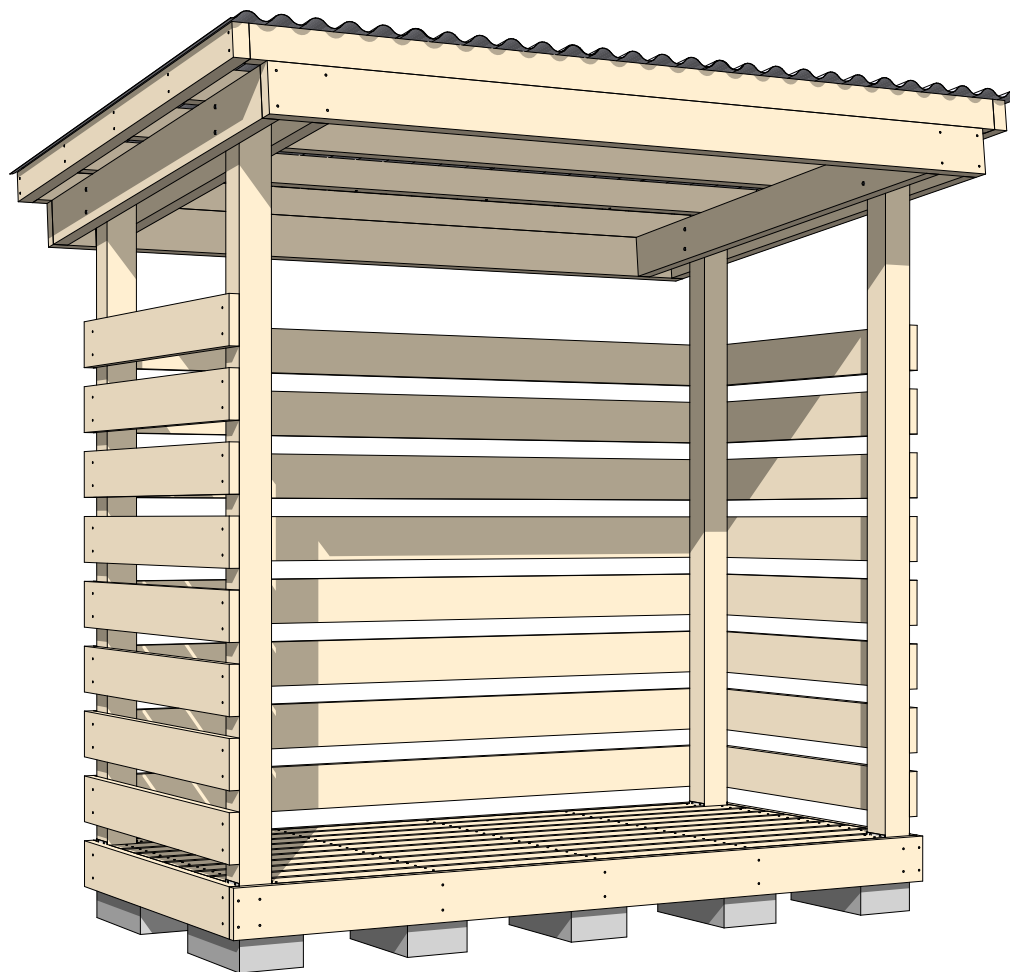
PLANS 4'x8'

DIY Project
Planmage Blueprints



www.planmage.com

3D Perspective View



FIREWOOD SHED

PLANS 4'x8'

DIY Project
Planmage Blueprints



www.planmage.com

3D

1.01

Materials Schedule

Name	Code	Description	Size	Lenght	Quantity
Connectors					
	CN	Post base 4x4 galvanized	4" x 4"	---	4
Fasteners					
	SC1	1 ½-in. Structural-Connector Screws	---	---	25
	SC2	3-in. Galvanized Deck Screws	---	---	116
	SC3	2 ½-in. Galvanized Deck Screws	---	---	126
	SC4	Self-Drilling Roofing Screws	---	---	30
	SC5	4 ½-in. Heavy-Duty Connector Screws	---	---	16
	SC6	5 ½-in Timber Screws	---	---	20
	SC7	4-in Timber Screws	---	---	40
Floor					
	A1	Pressure treated lumber	6" x 4"	48"	2
	A2	Pressure treated lumber	4" x 4"	48"	3
	B1	Pressure treated lumber	4" x 2"	96"	8
	B2	Pressure treated lumber	4" x 2"	88"	2
Foundation					
	FD	4x8x16 - solid-concrete blocks	---	4"	10
Posts/Rafters					
	C1	Pressure treated lumber	4" x 4"	93"	2
	C2	Pressure treated lumber	4" x 4"	88 1/4"	2
	D1	Pressure treated lumber	2" x 6"	71"	4
	D2	Pressure treated lumber	2" x 6"	100"	2
Roof					
	E1	Pressure treated lumber	2" x 4"	104"	5
	E2	Pressure treated lumber	2" x 4"	75"	2
	RF	2.16-ft. by 8-ft. Corrugated Metal Roof Panels	26" x 9"	---	4
	RF	2.16-ft. by 8-ft. Corrugated Metal Roof Panels	24" x 9"	---	1
Walls					
	F1	Pressure treated deck board	1 1/4" x 6"	96"	9
	F2	Pressure treated deck board	1 1/4" x 6"	49 1/4"	18
	F3	Pressure treated deck board	1 1/4" x 6"	98 1/2"	1
Z (Optional)					
	Z1	Diagonal Bracing	1 1/4" x 6"	80"	2
	Z2	Spacer Block - Floor	1" x 4"	---	1
	Z3	Spacer Block - Walls	4" x 2 1/2"	9 3/4"	2

FIREWOOD SHED

PLANS 4'x8'

DIY Project
Planmage Blueprints



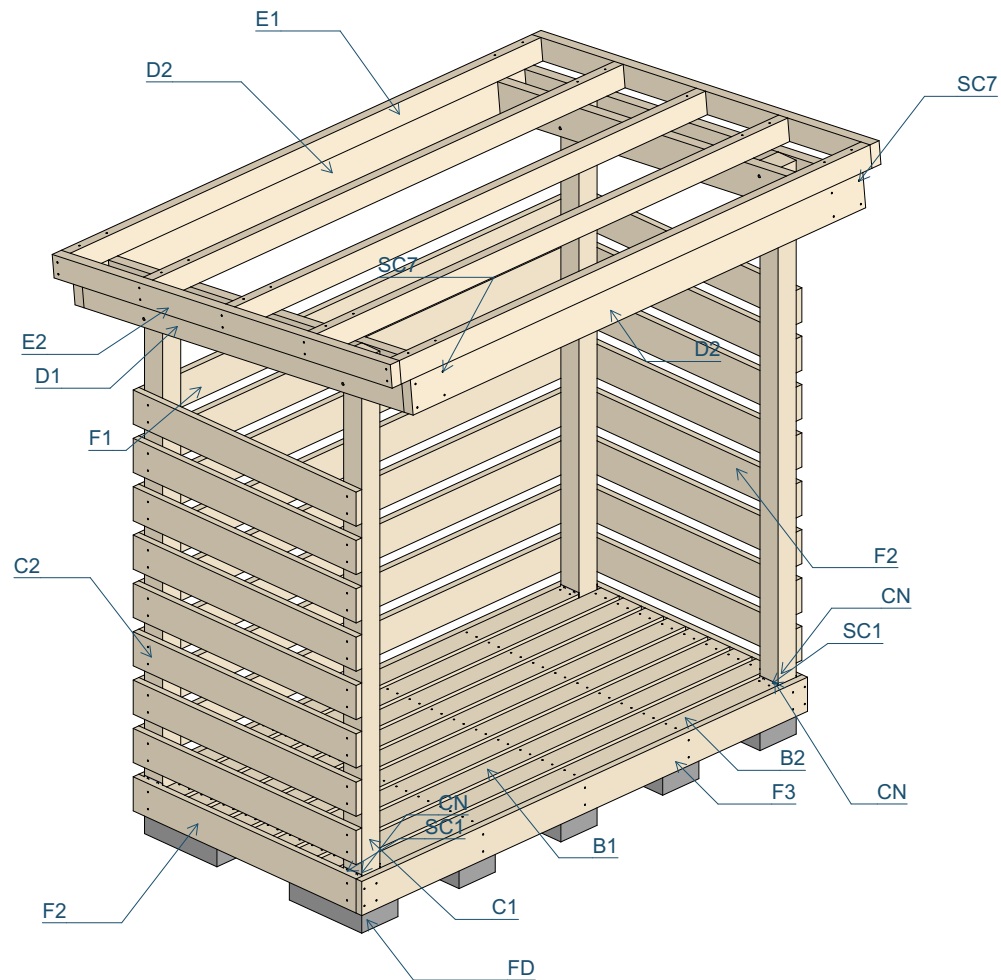
www.planmage.com

Components

2.01

Framing

1:30



FIREWOOD SHED

PLANS 4'x8'

DIY Project
Planmage Blueprints



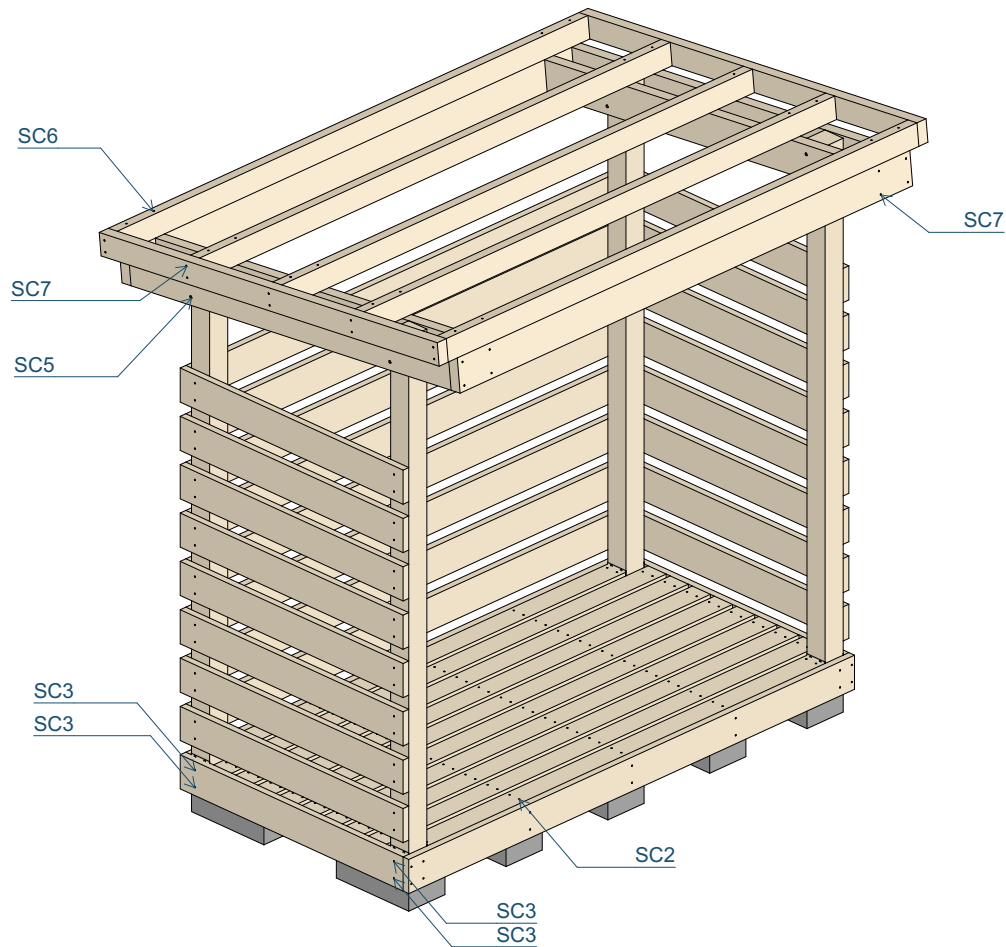
www.planmage.com

Components

2.02

Fasteners

1:30



FIREWOOD SHED

PLANS 4'x8'

DIY Project
Planmage Blueprints



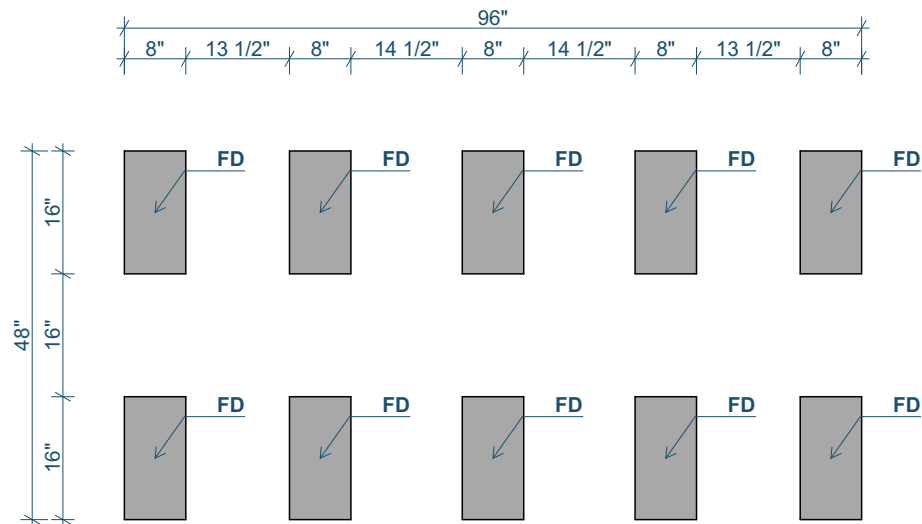
www.planmage.com

Components

2.03

Foundation Plan

1:25



FIREWOOD SHED

PLANS 4'x8'

DIY Project
Planmage Blueprints



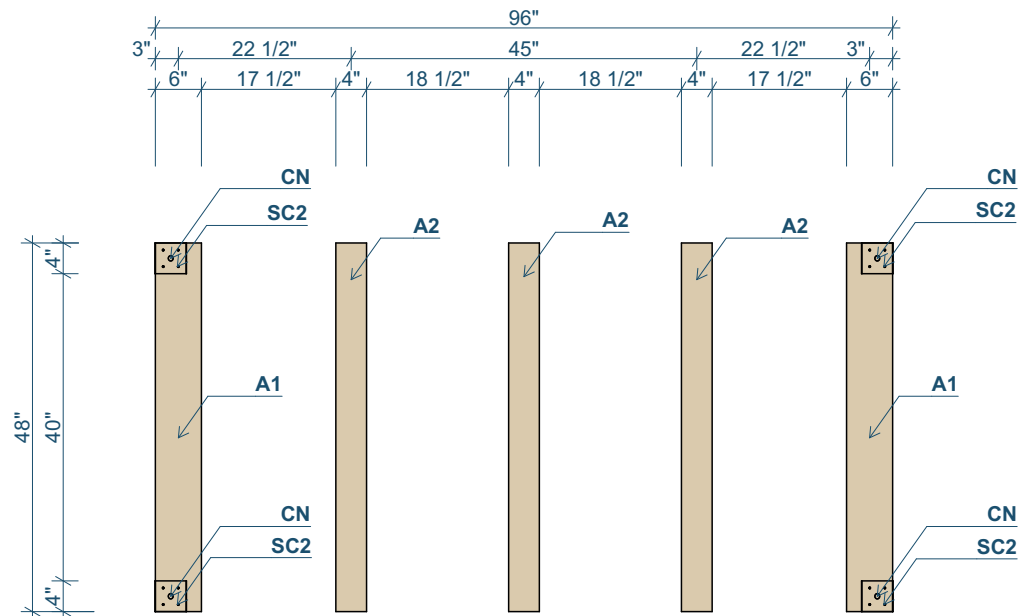
www.planmage.com

Drawing Plans

3.01

Floor Plan - Floor Beams

1:25



FIREWOOD SHED

PLANS 4'x8'

DIY Project
Planmage Blueprints



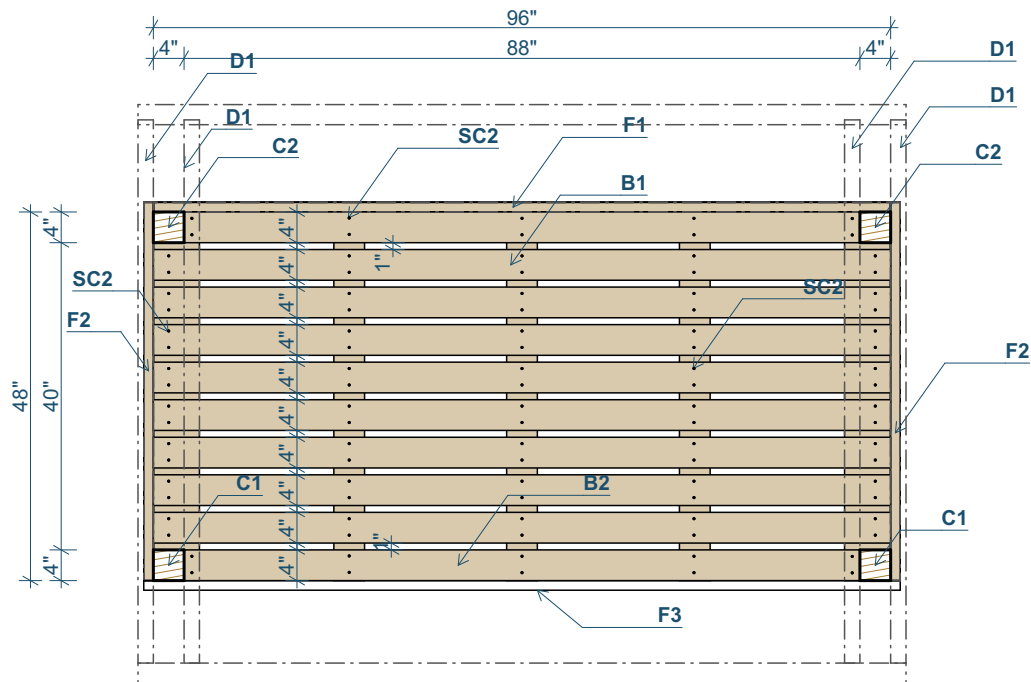
www.planmage.com

Drawing Plans

3.02

Floor Plan

1:25



FIREWOOD SHED

PLANS 4'x8'

DIY Project
Planmage Blueprints

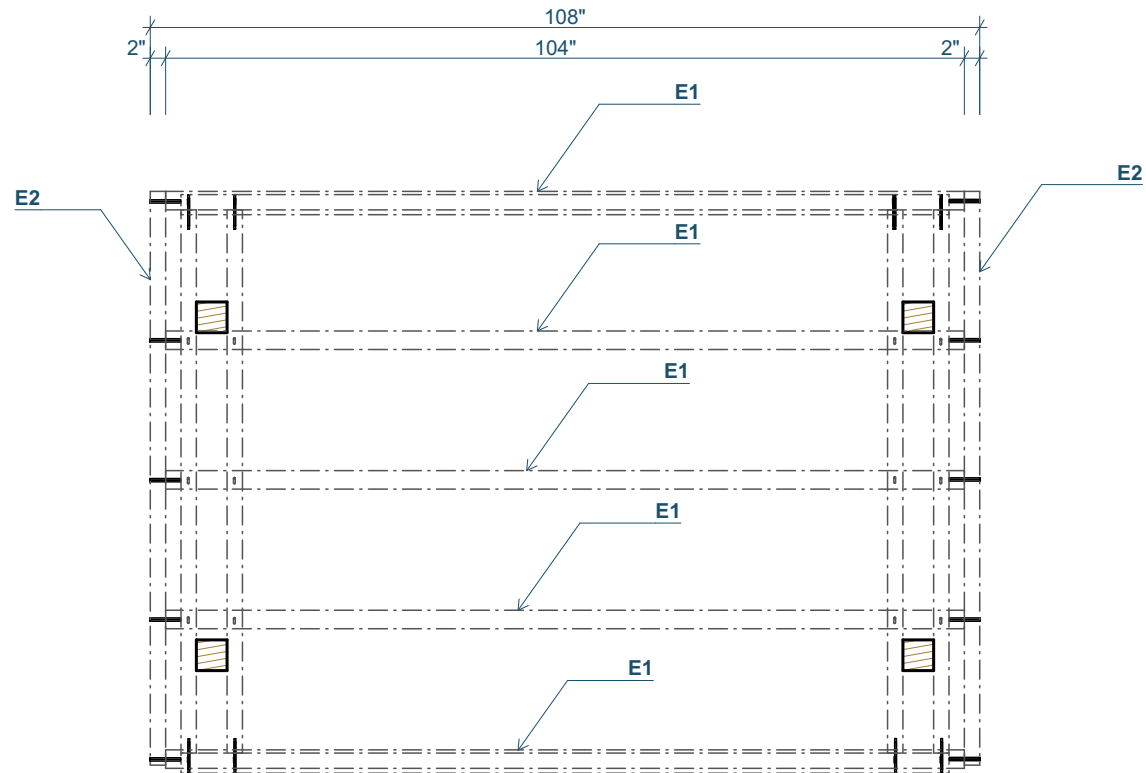


www.planmage.com

Drawing Plans

3.03

1:25



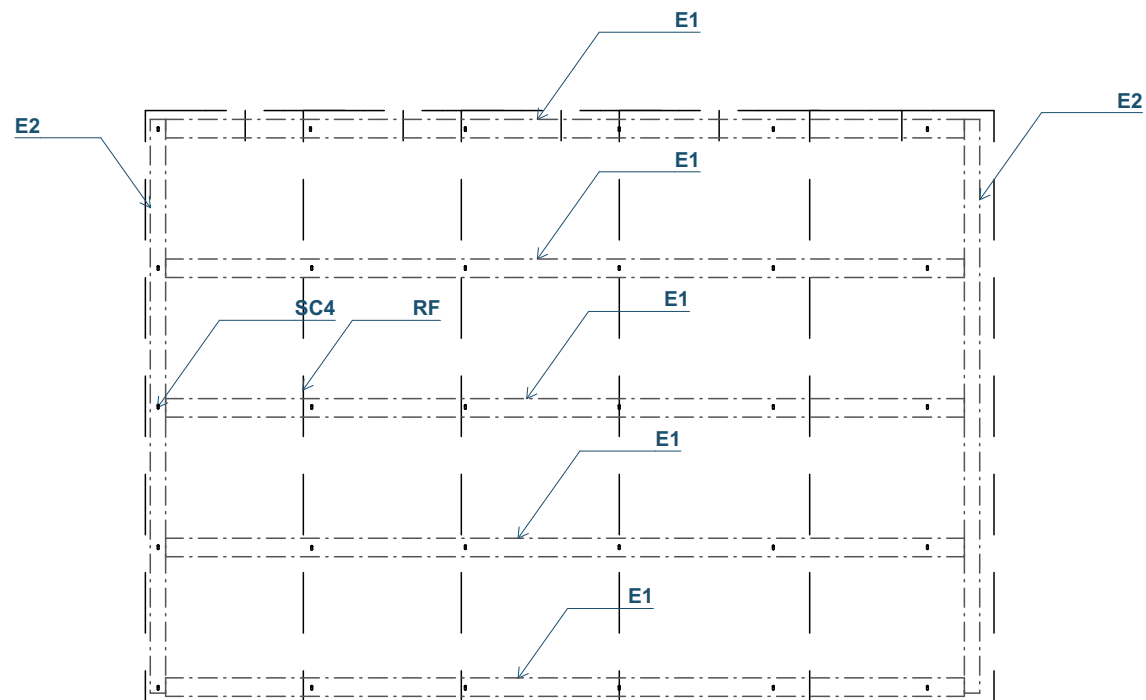
DIY Project
Planmage Blueprints



3.04

Floor Plan - Roof

1:25



FIREWOOD SHED

PLANS 4'x8'

DIY Project
Planmage Blueprints



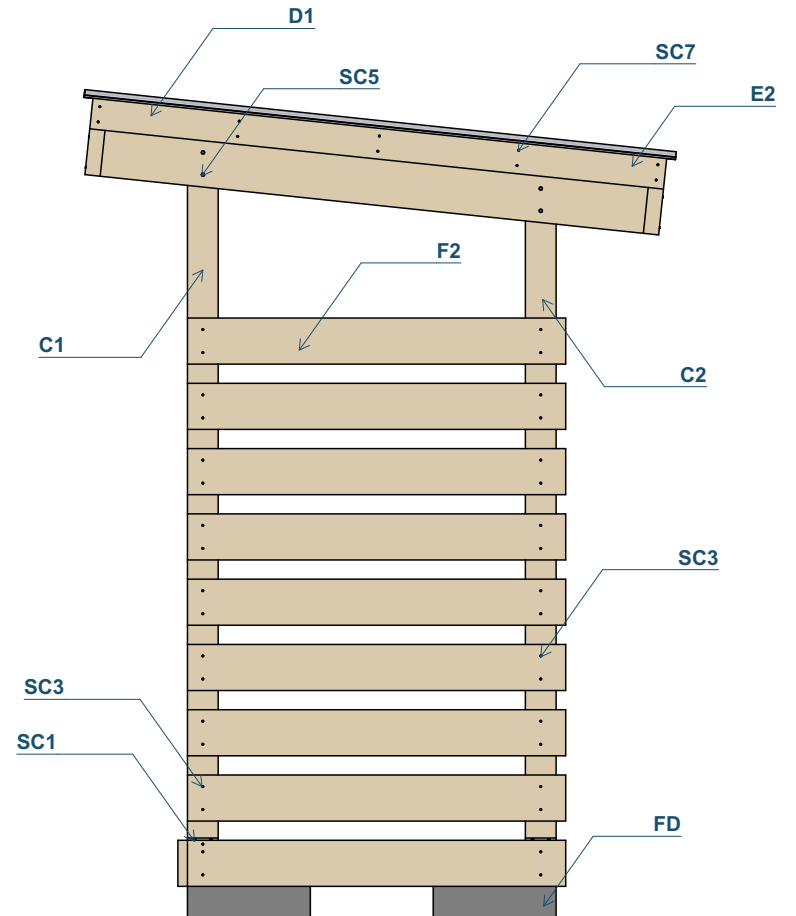
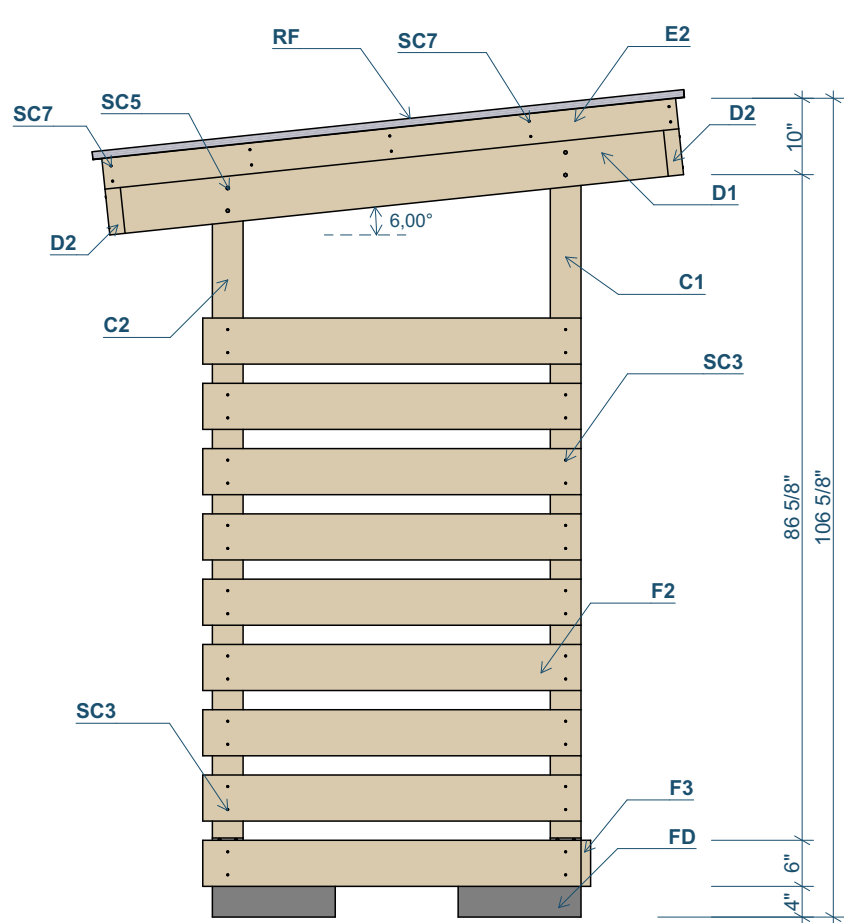
www.planmage.com

Drawing Plans

3.05

Views 1 and 3

1:25



FIREWOOD SHED

PLANS 4'x8'

DIY Project
Planmage Blueprints



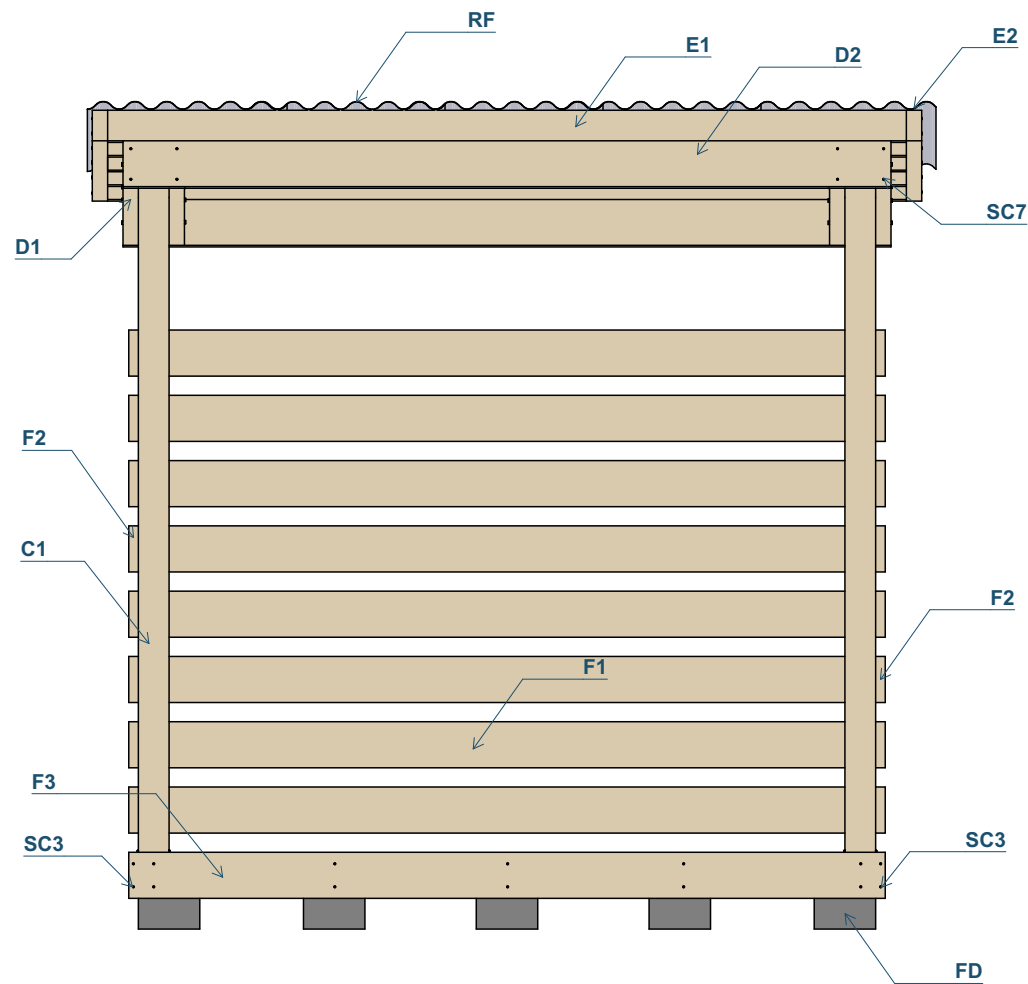
www.planmage.com

Drawing Plans

3.06

View 2

1:25



FIREWOOD SHED

PLANS 4'x8'

DIY Project
Planmage Blueprints



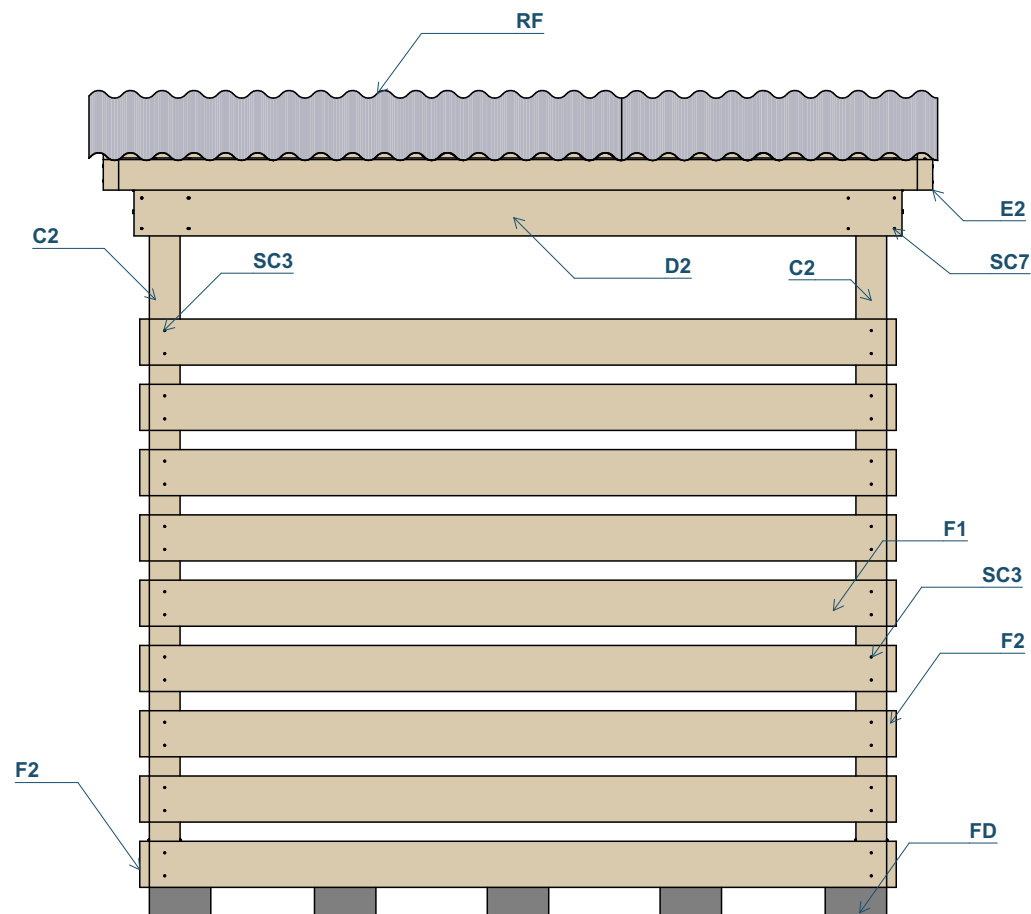
www.planmage.com

Drawing Plans

3.07

View 4

1:25



FIREWOOD SHED

PLANS 4'x8'

DIY Project
Planmage Blueprints



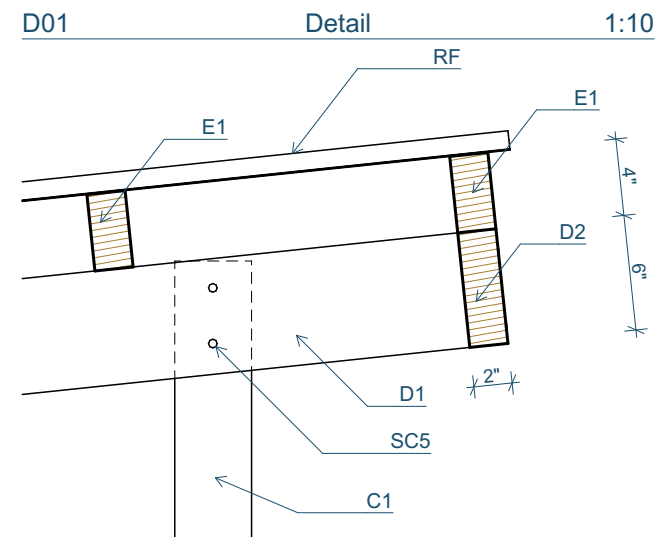
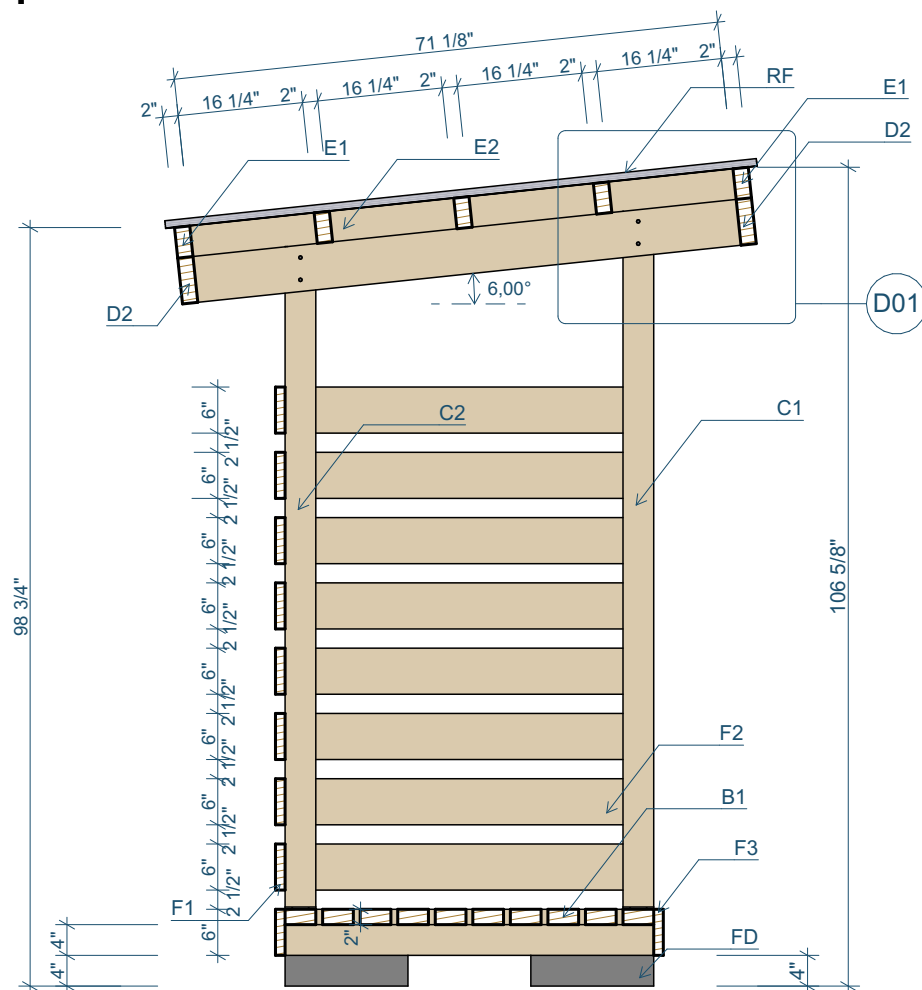
www.planmage.com

Drawing Plans

3.08

Section 1

1:25, 1:10



FIREWOOD SHED

PLANS 4'x8'

DIY Project
Planmage Blueprints



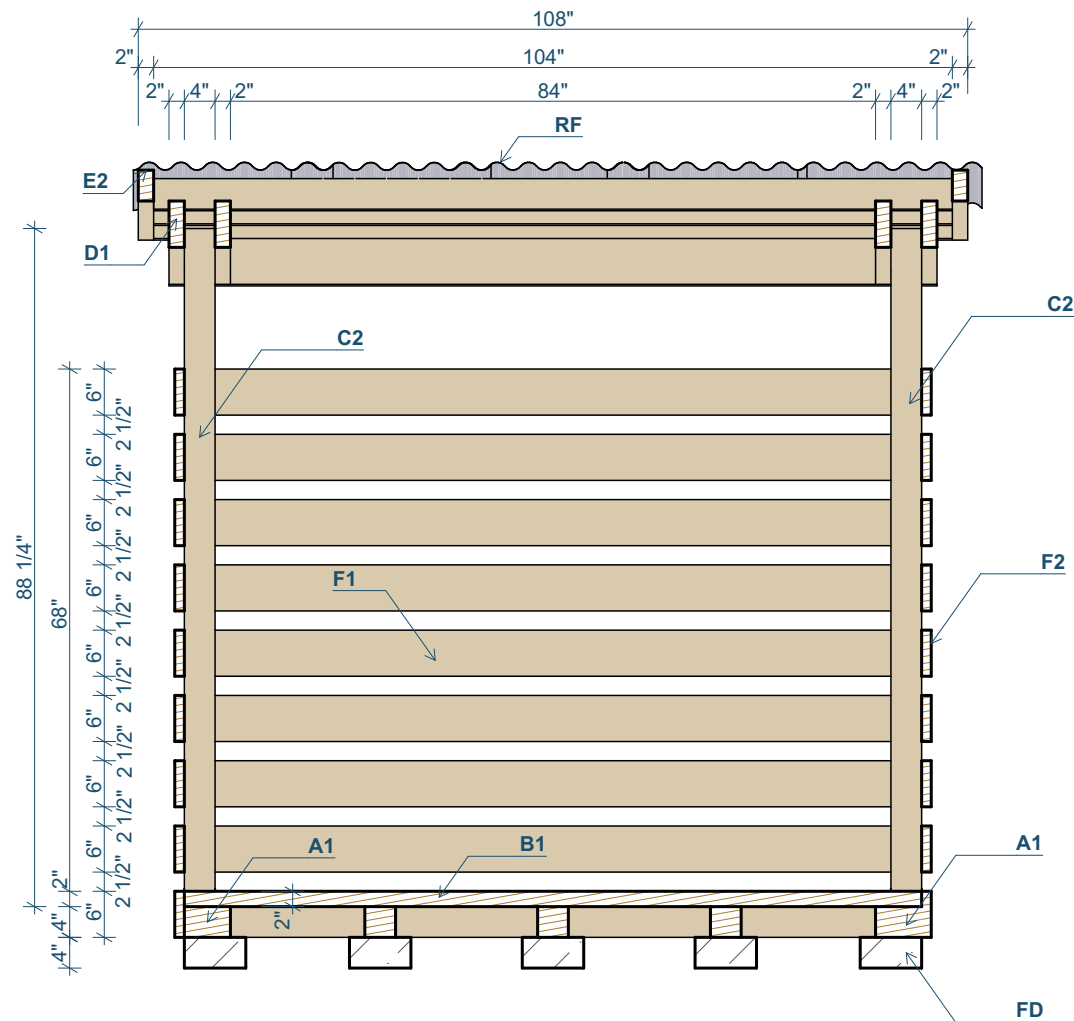
www.planmage.com

Drawing Plans

3.09

Section 2

1:25



FIREWOOD SHED

PLANS 4'x8'

DIY Project
Planmage Blueprints



www.planmage.com

Drawing Plans

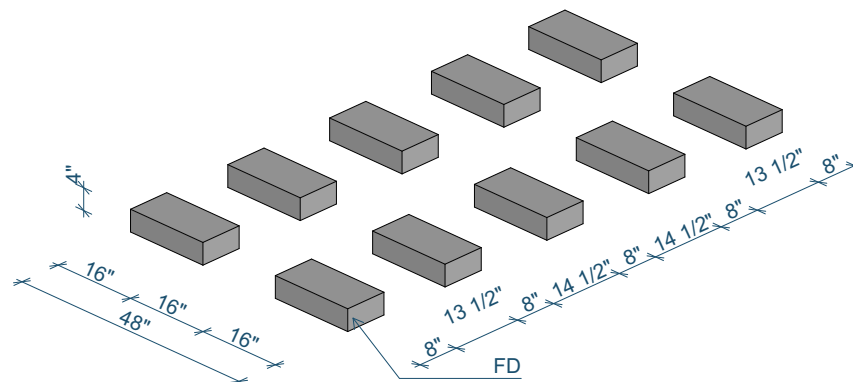
3.10

Step 1

1:30

Foundation

Prepare the shed base with concrete blocks set in beds of gravel. These blocks will support all the floor beams. First dig footings then set and level solid concrete blocks on compacted gravel. You can also lay a bed of tamped gravel instead of using concrete blocks.



FIREWOOD SHED

PLANS 4'x8'

DIY Project
Planmage Blueprints



www.planmage.com

Step by Step

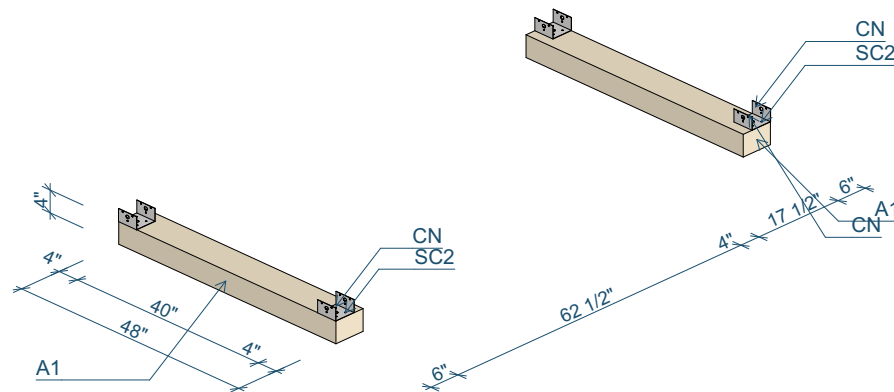
4.01

Step 2

1:30

Floor Beams

The floor beams will stand on the concrete blocks. Cut the wood timber to length. Then fasten post bases to the ends of floor beams with screws. For the side floor beams put post base all the way to the edge and for the center floor beam put post base on the center.



FIREWOOD SHED

PLANS 4'x8'

DIY Project
Planmage Blueprints



www.planmage.com

Step by Step

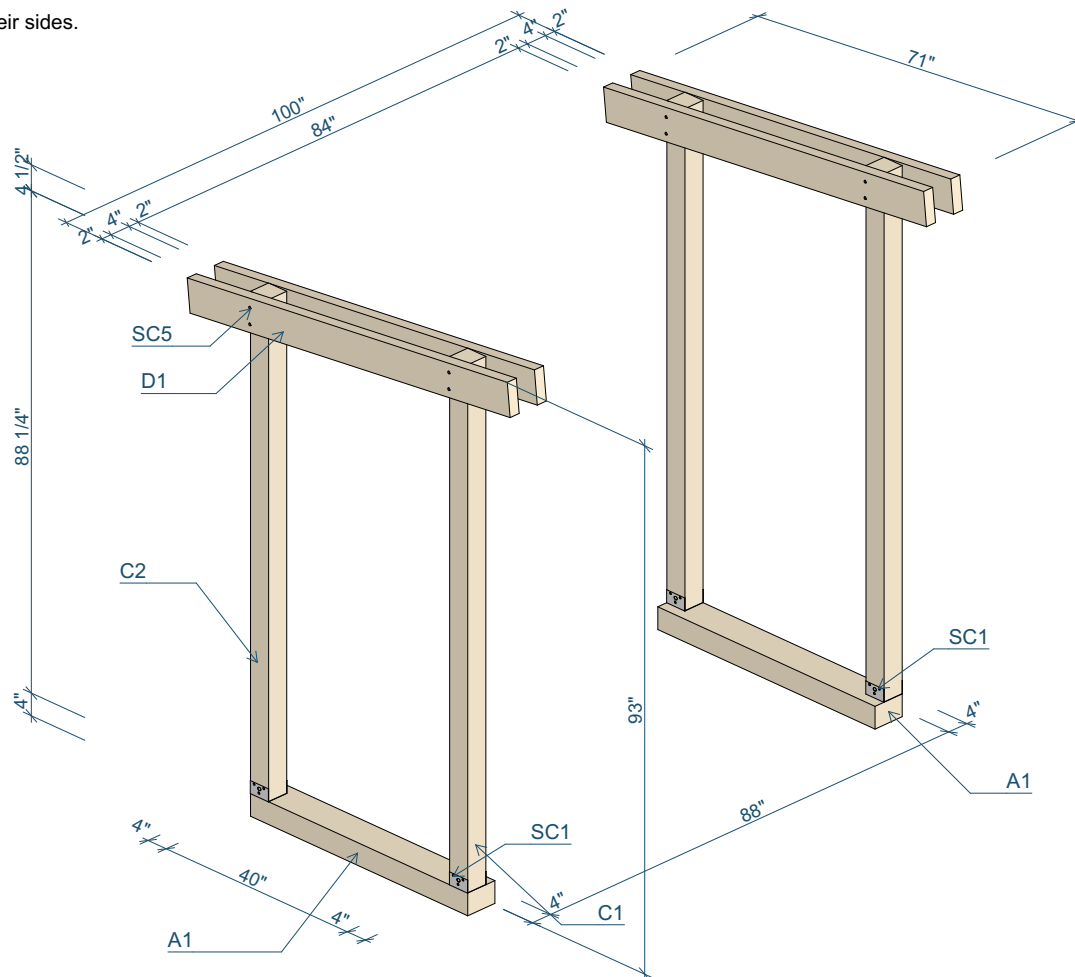
4.02

Step 3

1:30

Posts

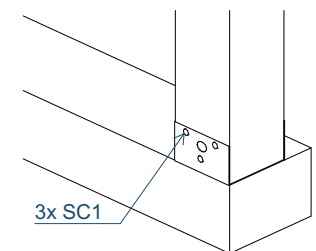
Cut posts to length and fasten them to the post bases. For this step you can have the posts and the floor beams lying on their sides.



Rafters

Cut rafters to length and fasten them to the top of the posts. Leave some overhang on each end. For this step you can also have the posts, floor beams and rafters lying on their sides.

Post Base 1:10



FIREWOOD SHED

PLANS 4'x8'

DIY Project
Planmage Blueprints



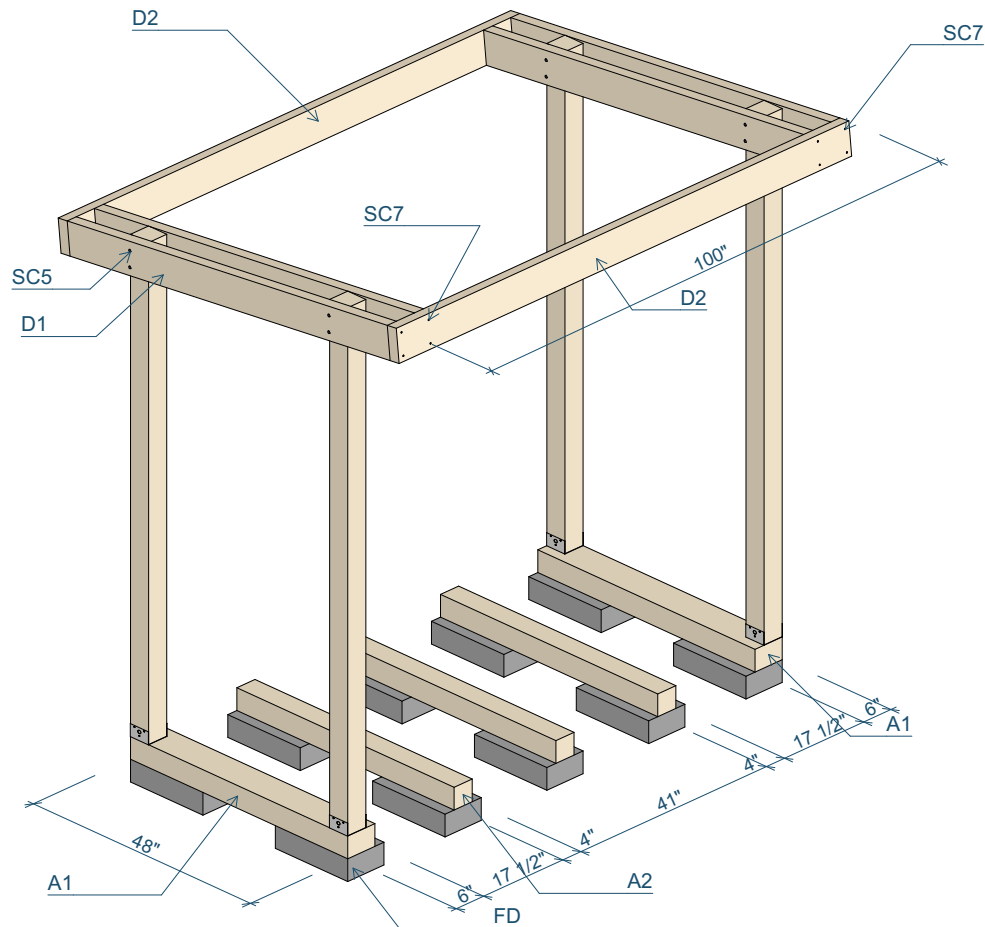
www.planmage.com

Step by Step

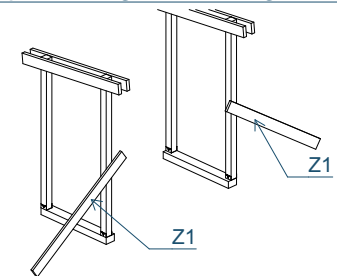
4.03

Step 4

1:30



Tip Diagonal Bracing 1:100



You can temporary attach diagonal bracing to keep the wooden frame lock in place until there are enough floor and wall boards.

FIREWOOD SHED

PLANS 4'x8'

DIY Project
Planmage Blueprints



www.planmage.com

Step by Step

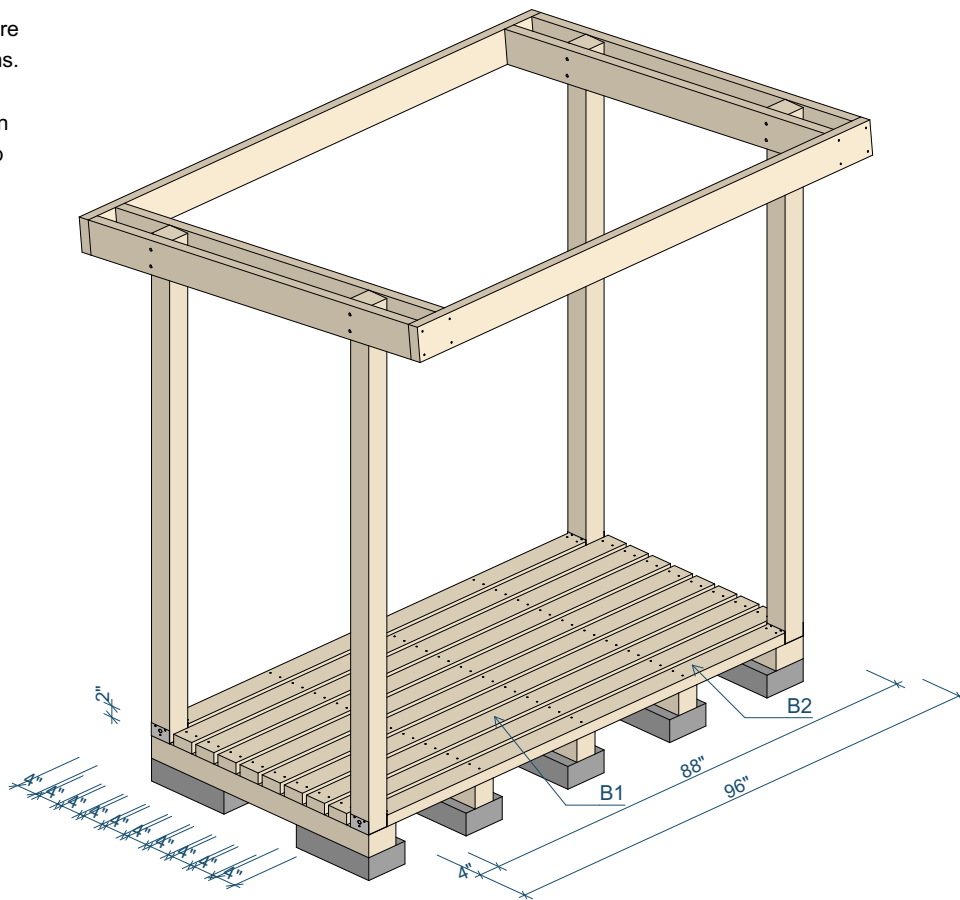
4.04

Step 5

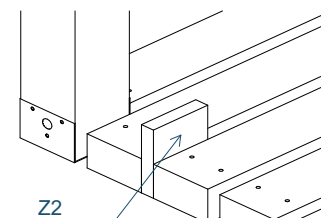
1:30

Floor

By laying the floor boards will keep the base solid. The appropriate spacing between the floor beams keep the shed floor strong. Fasten floor boards with two screws where they cross each floor beams. Plan laying the boards and leave 0,8-1-in. gaps between the boards for airflow to help dry the firewood.



Tip Spacer Blocks - Floor 1:10



Use spacer blocks to create 0,8-1-in gap.
No need to measure, but plan the width of the blocks.

FIREWOOD SHED

PLANS 4'x8'

DIY Project
Planmage Blueprints



www.planmage.com

Step by Step

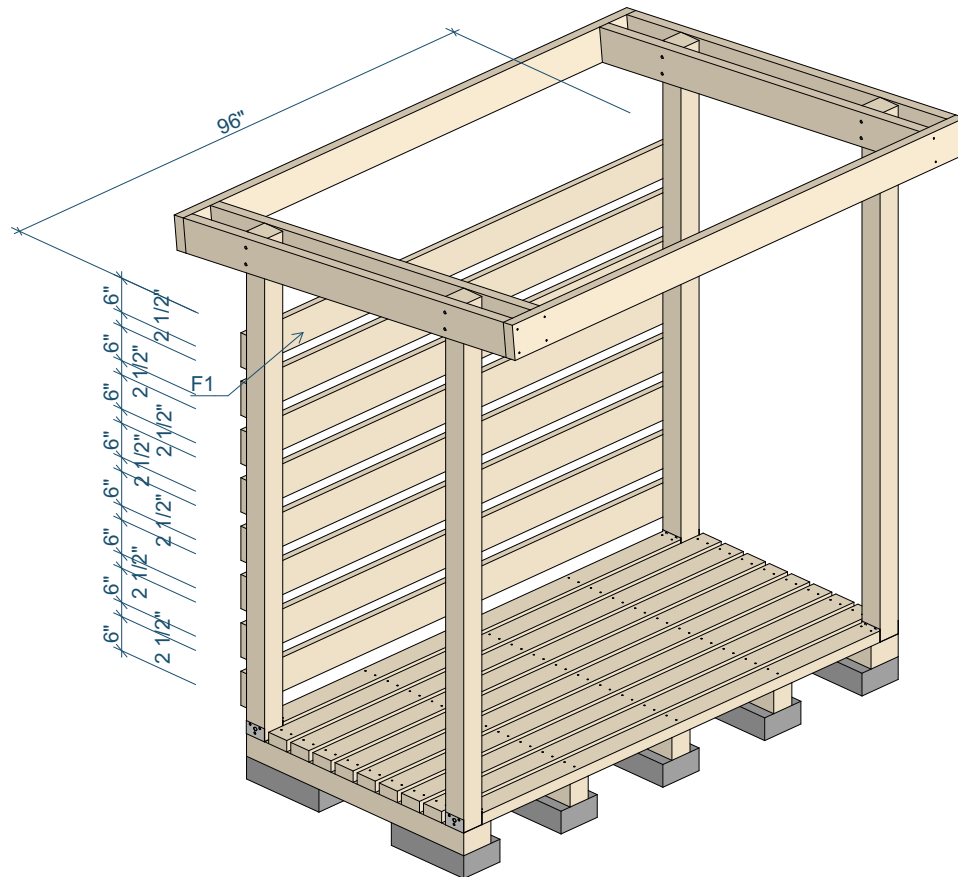
4.05

Step 6

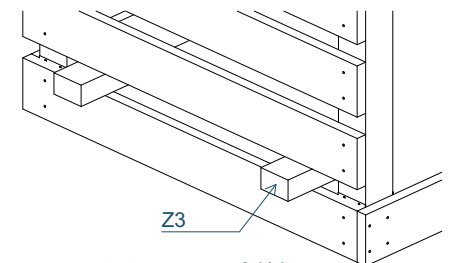
1:30

Walls

Use the decking for the wall that provides good balance of strength and thickness. Fasten the boards with two screws at each post.



Tip Spacer Blocks - Walls 1:20



Use spacer blocks to create 2 1/2-in gap. No need to measure, but plan the height. The top of the wall must finish with full-width board.

FIREWOOD SHED

PLANS 4'x8'

DIY Project
Planmage Blueprints



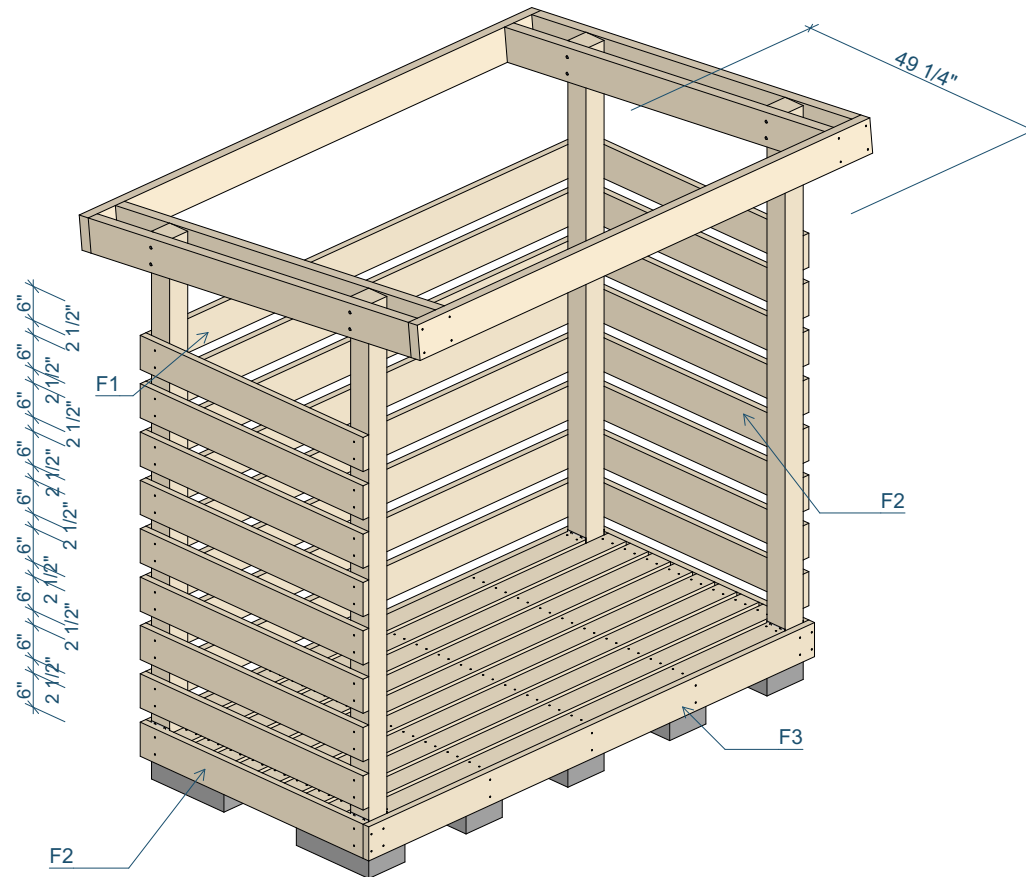
www.planmage.com

Step by Step

4.06

Step 7

1:30



FIREWOOD SHED

PLANS 4'x8'

DIY Project
Planmage Blueprints



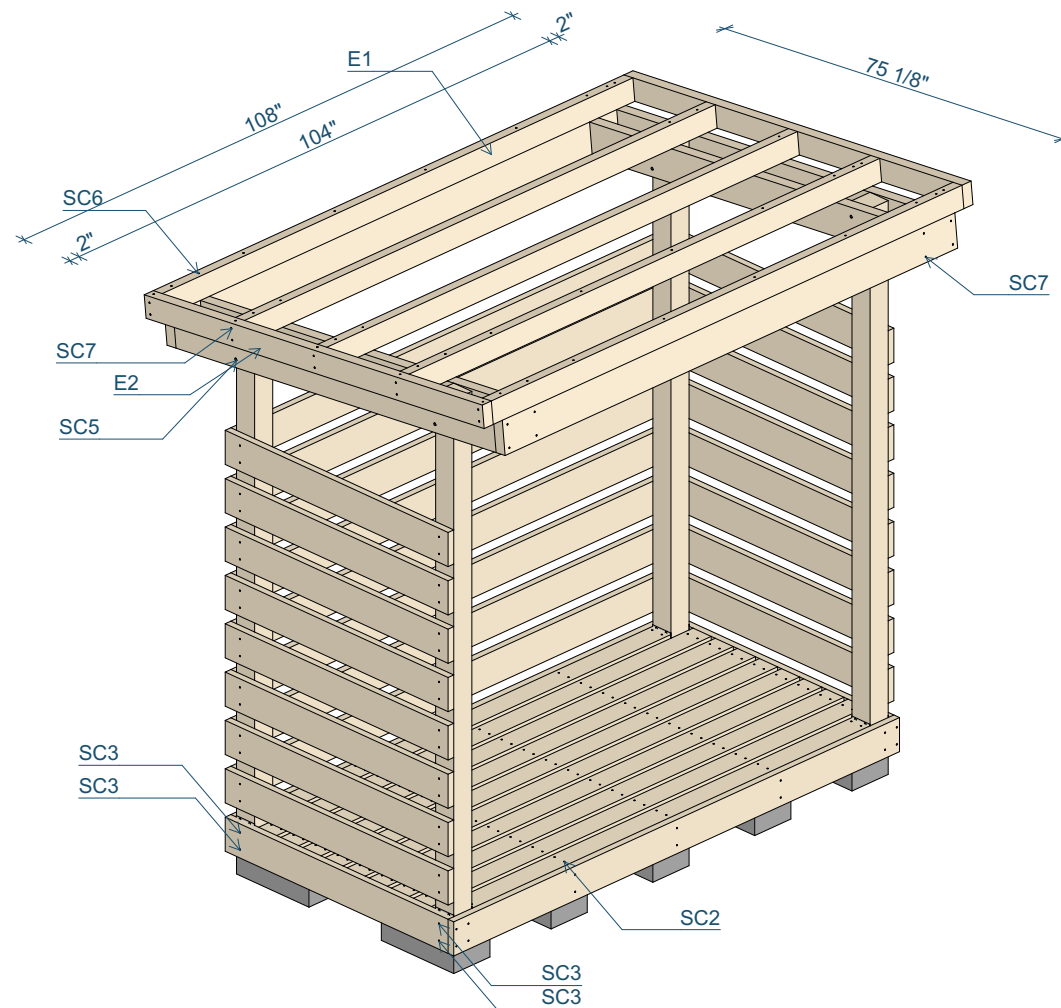
www.planmage.com

Step by Step

4.07

Step 8

1:30



Roof Framing

The rafters are like the beams to support the roof framing. Fasten the purlins to rafters with timber screws, then create roof framing by fastening ends of the purlins to trims also with two screws.

FIREWOOD SHED

PLANS 4'x8'

DIY Project
Planmage Blueprints



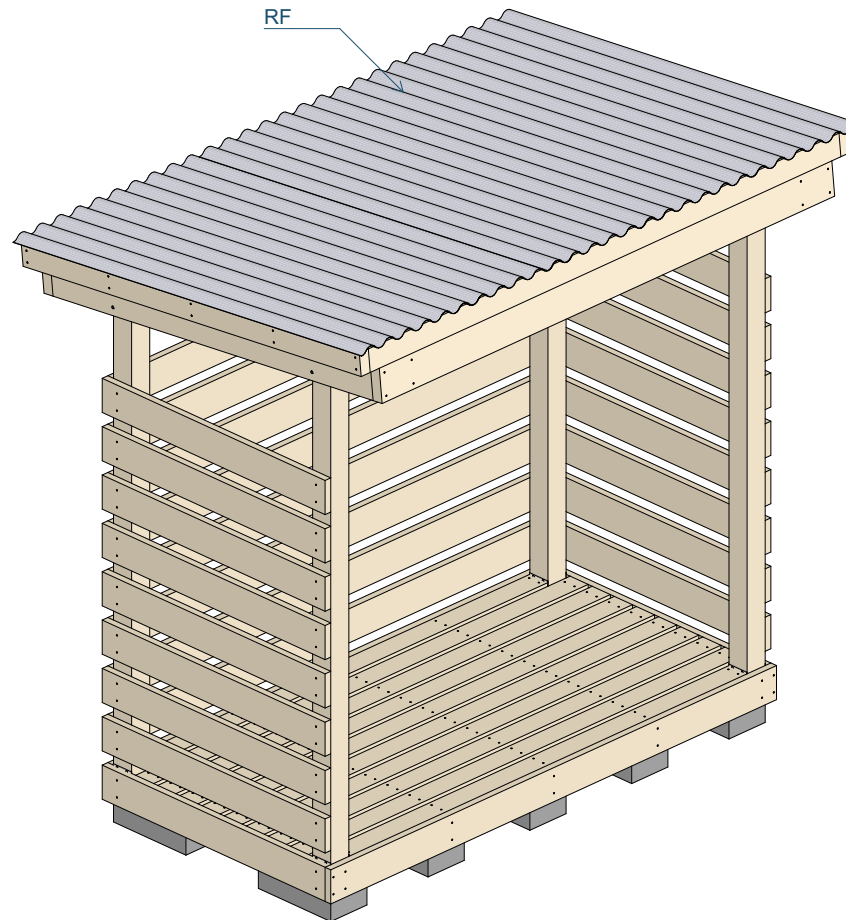
www.planmage.com

Step by Step

4.08

Step 9

1:30



Roof

Cut roof panels using metal-cutting blade in a circular saw to achieve clean cuts. Then put the panels on the roof framing and attach with roofing screws to roof framing. It is recommended to use roofing screws with silicone or rubber gaskets to prevent leaks. Refer to the fastening schedule from the manufacturer to find ideal spacing.

FIREWOOD SHED

PLANS 4'x8'

DIY Project
Planmage Blueprints



www.planmage.com

Step by Step

4.09

[illegible]

www.planmage.com